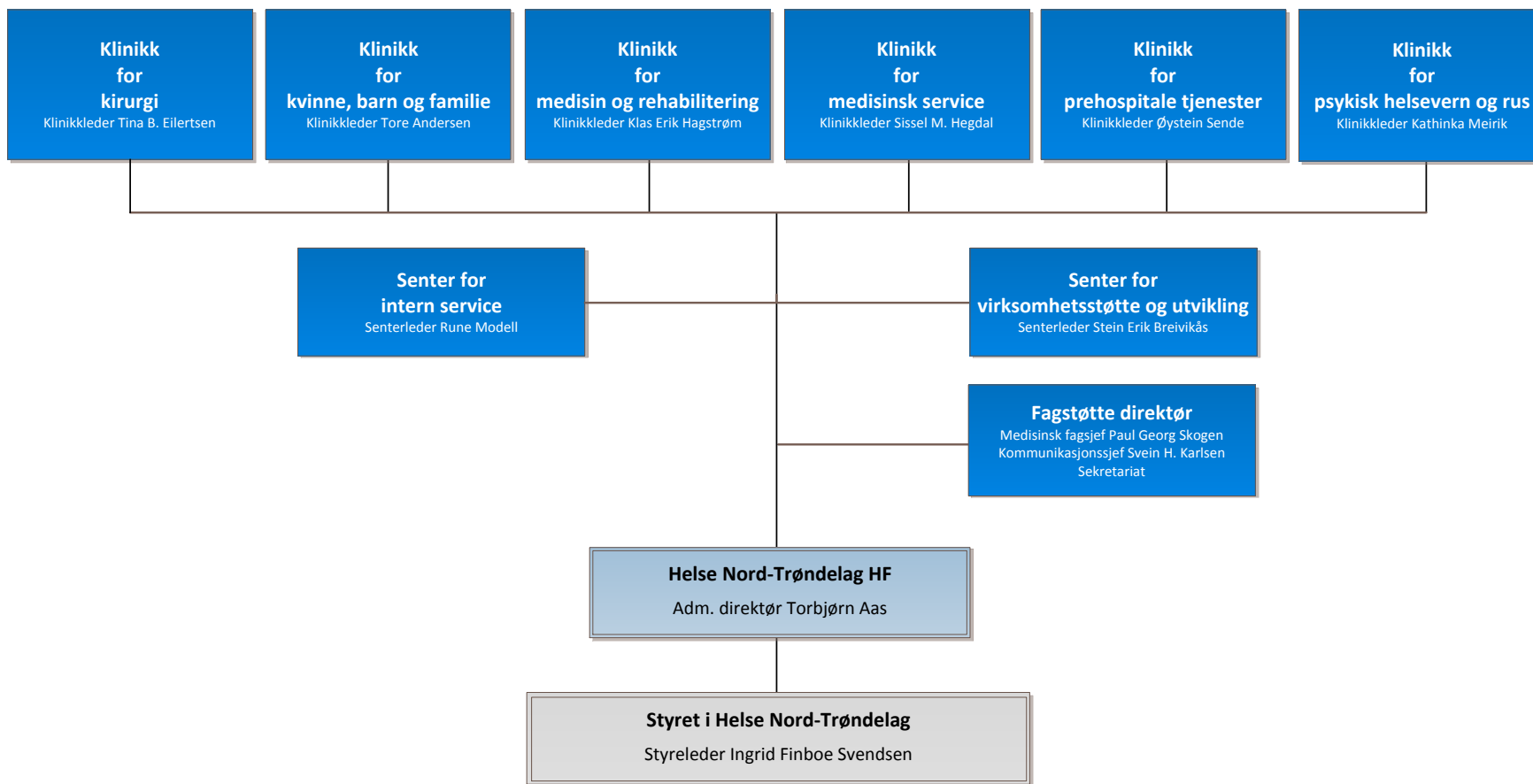
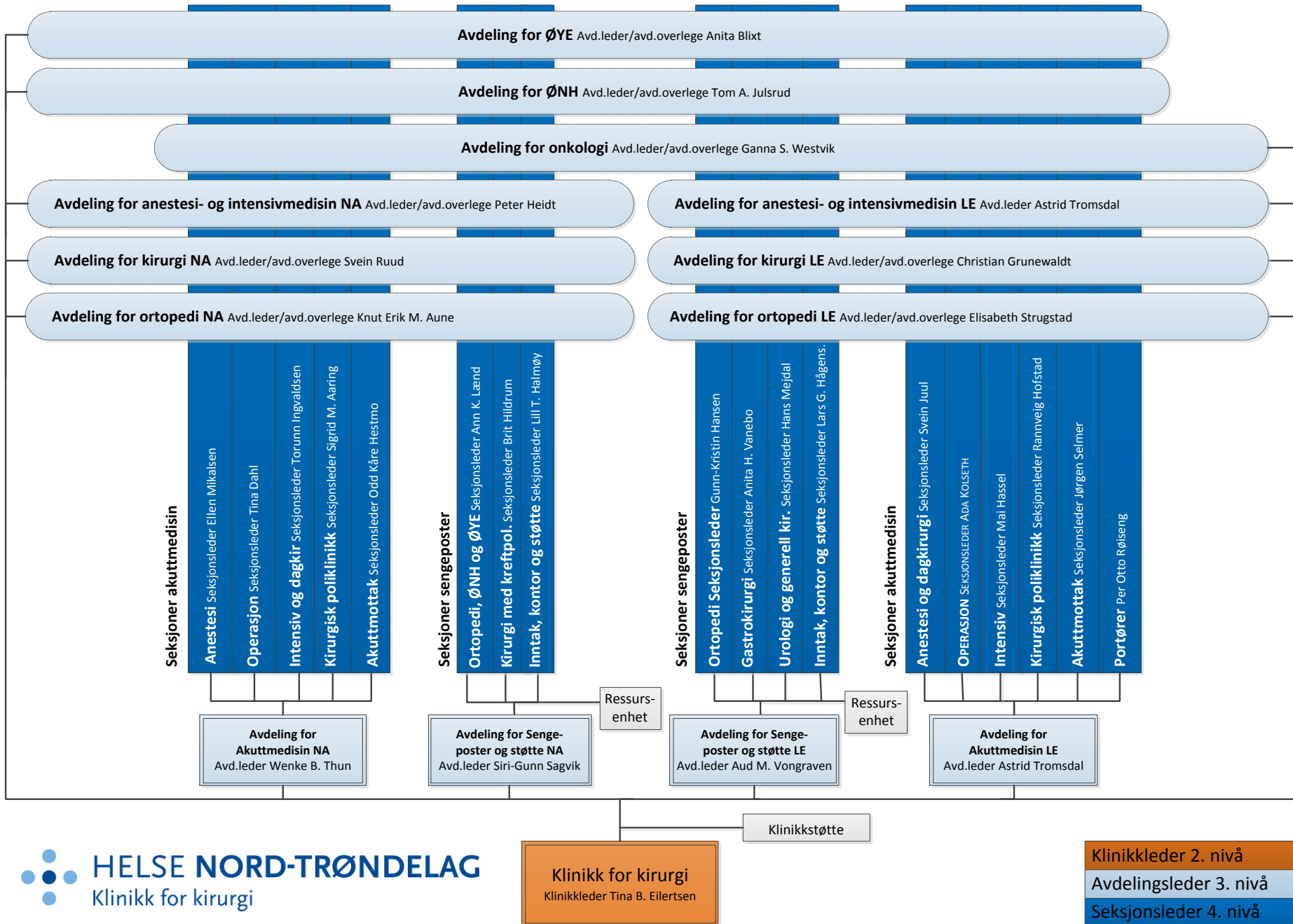


## Pasient

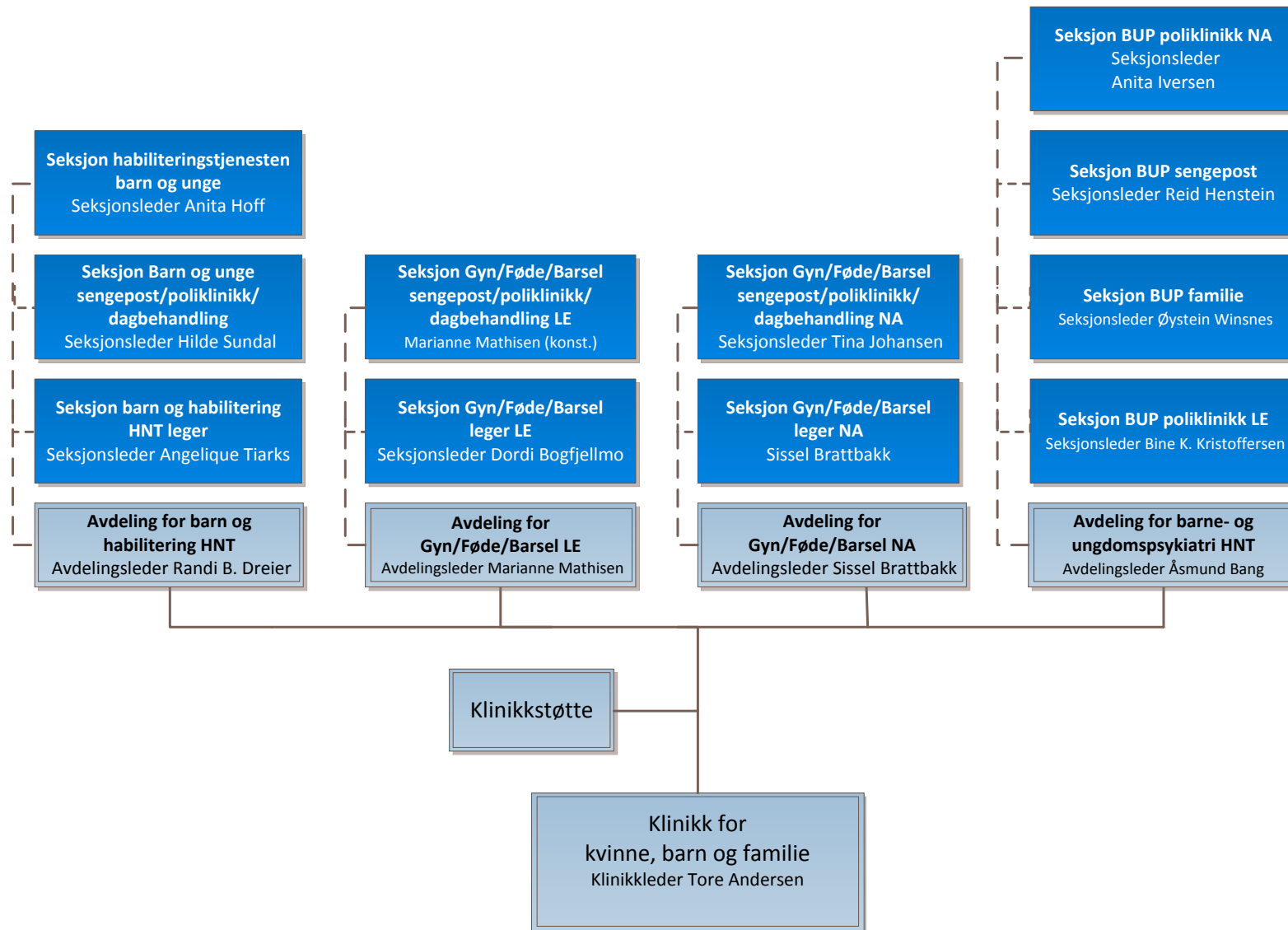






# HELSE NORD-TRØNDELAG

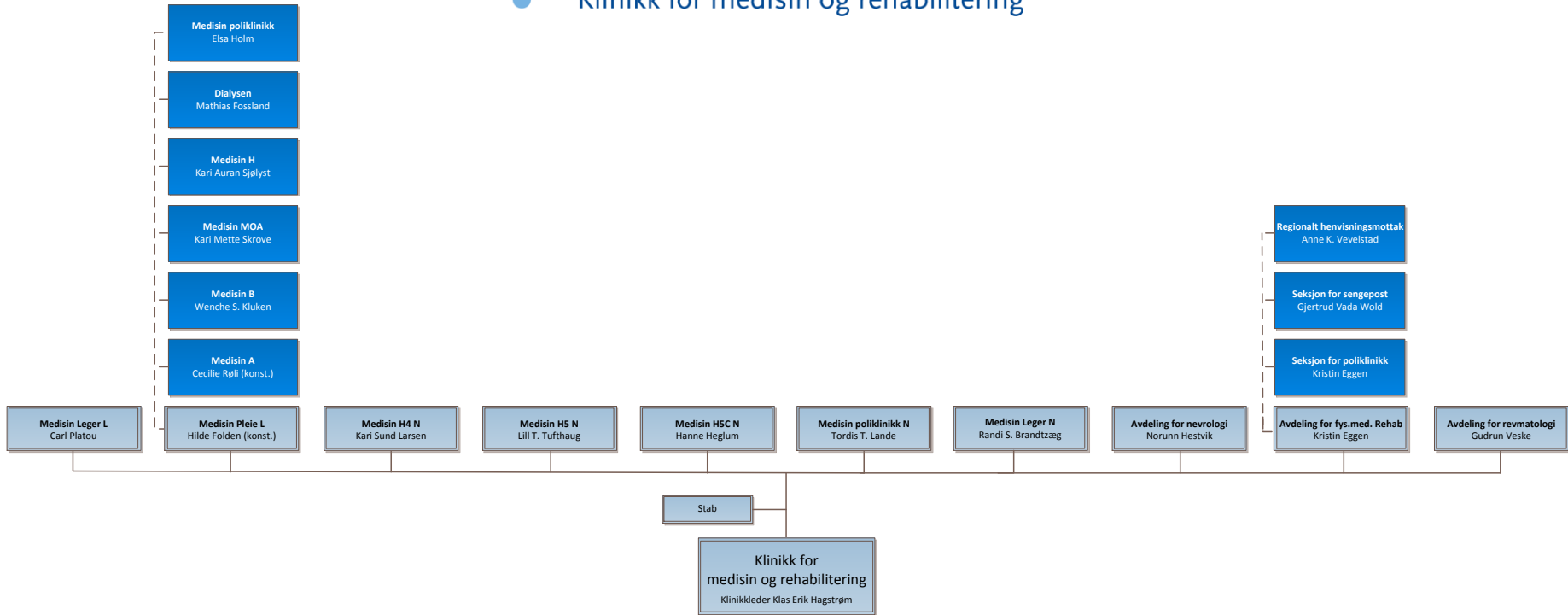
Klinikk for kvinne, barn og familie





# HELSE NORD-TRØNDELAG

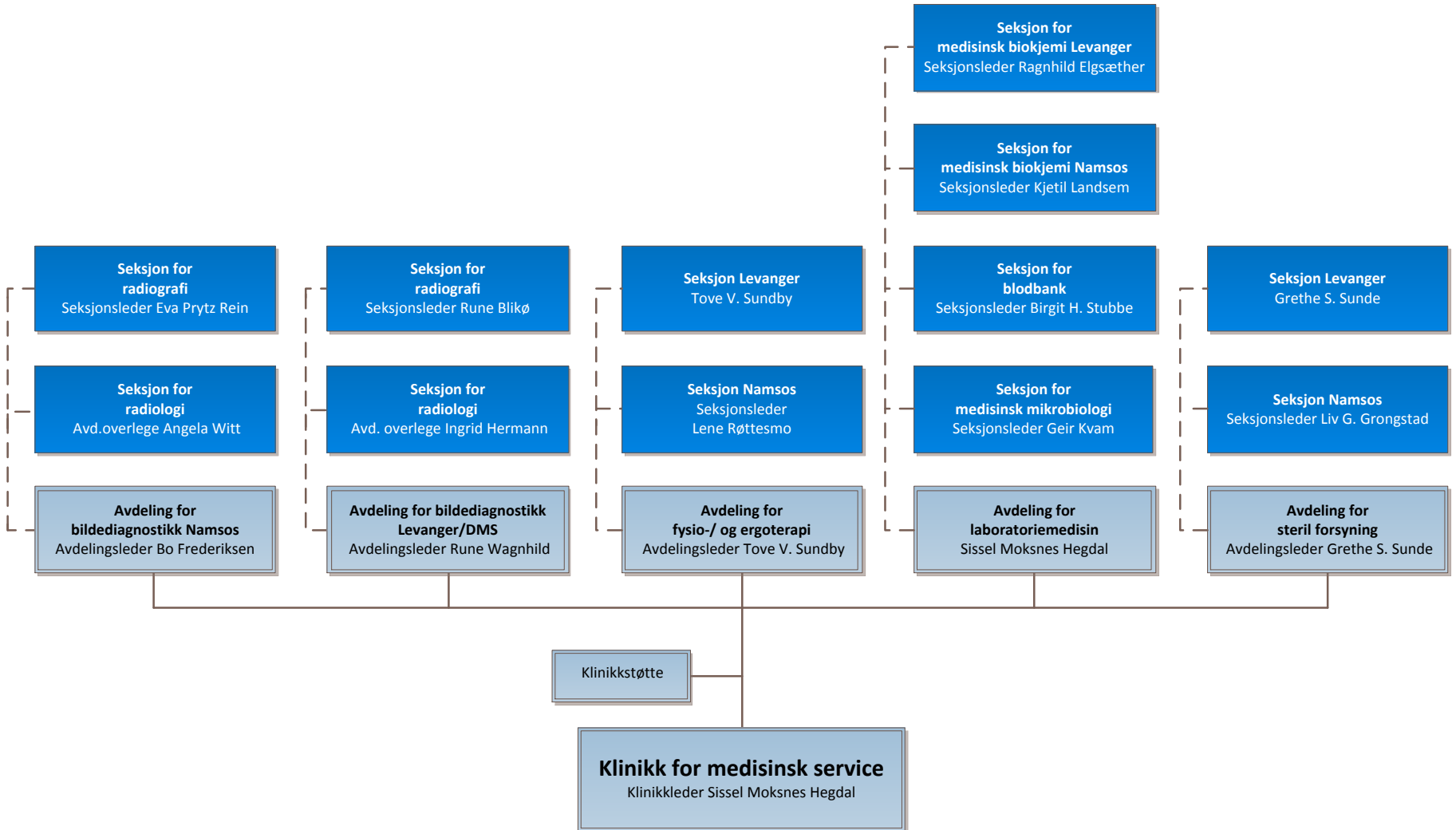
Klinikk for medisin og rehabilitering





# HELSE NORD-TRØNDELAG

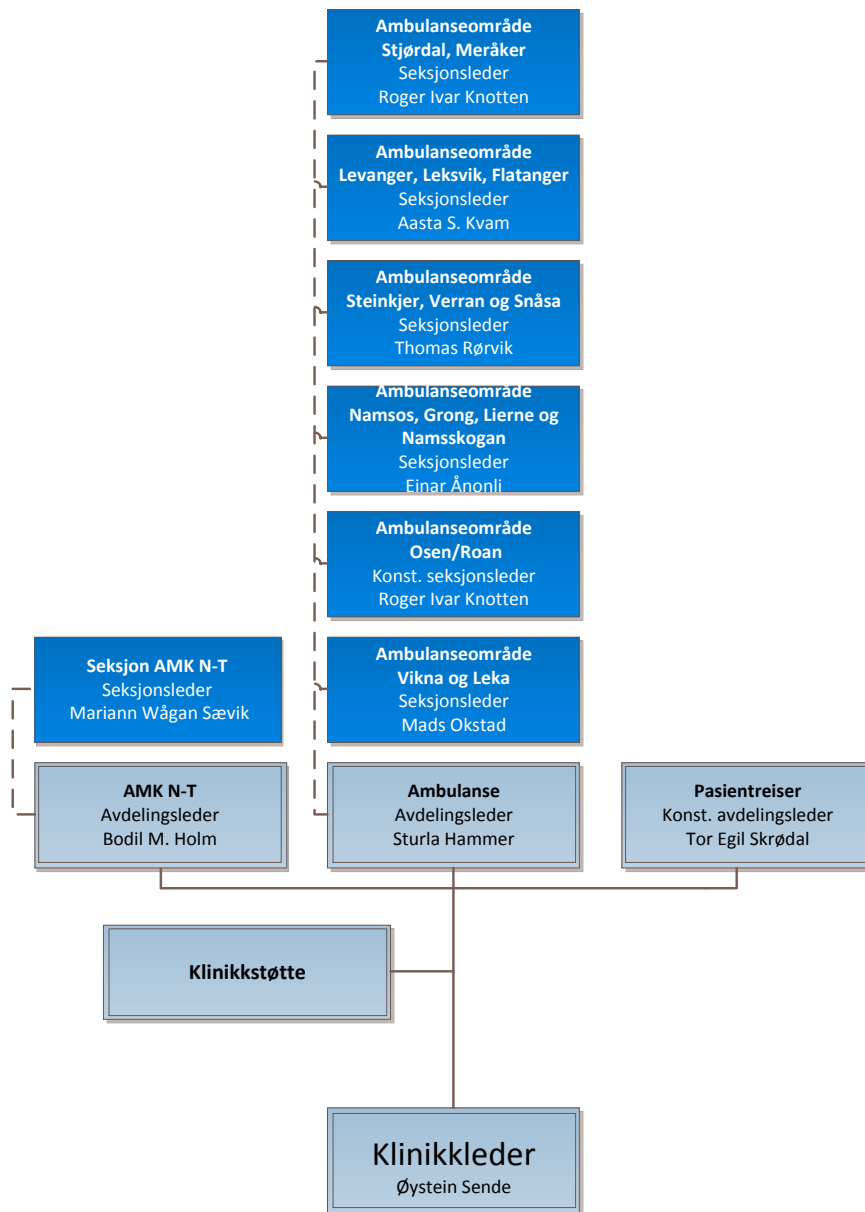
## Klinikk for medisinsk service





# HELSE NORD-TRØNDELAG

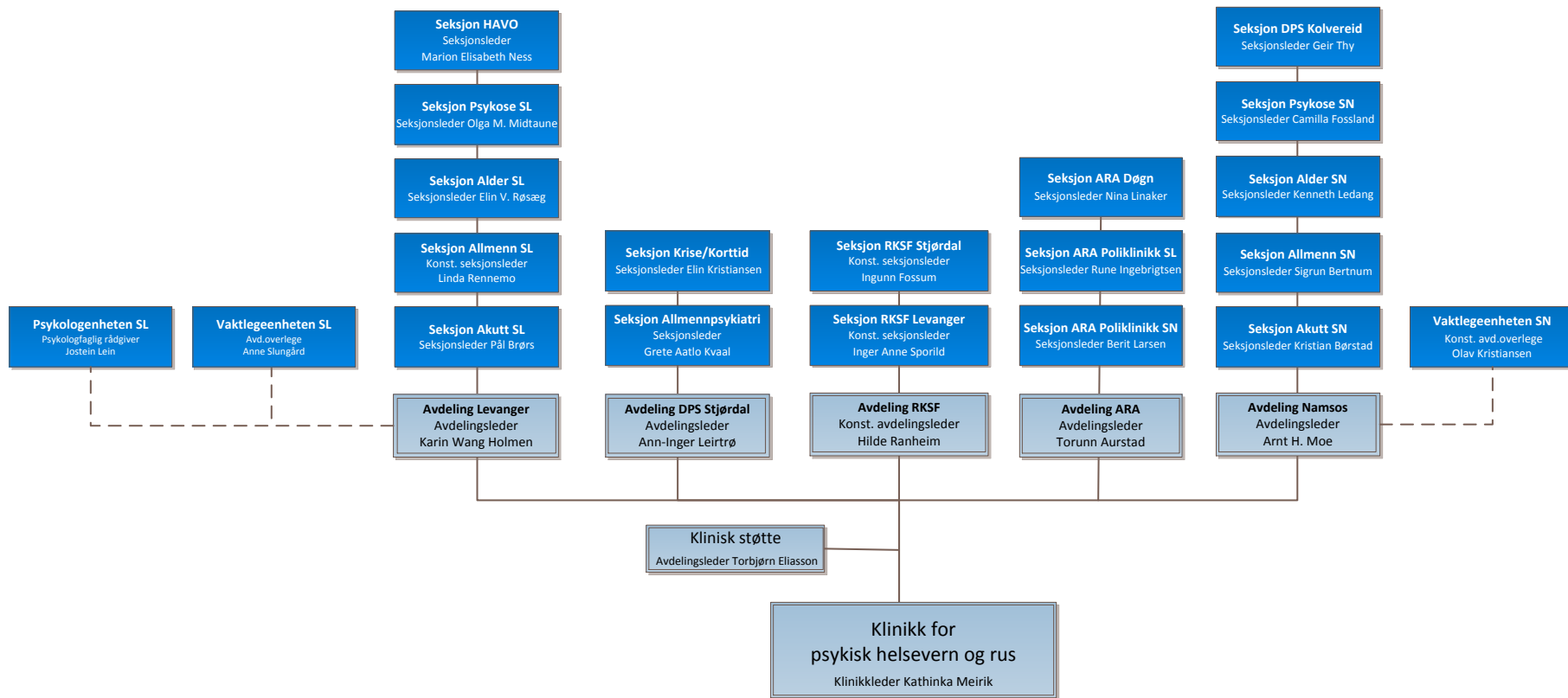
Klinikk for prehospitaler tjenester





# HELSE NORD-TRØNDELAG

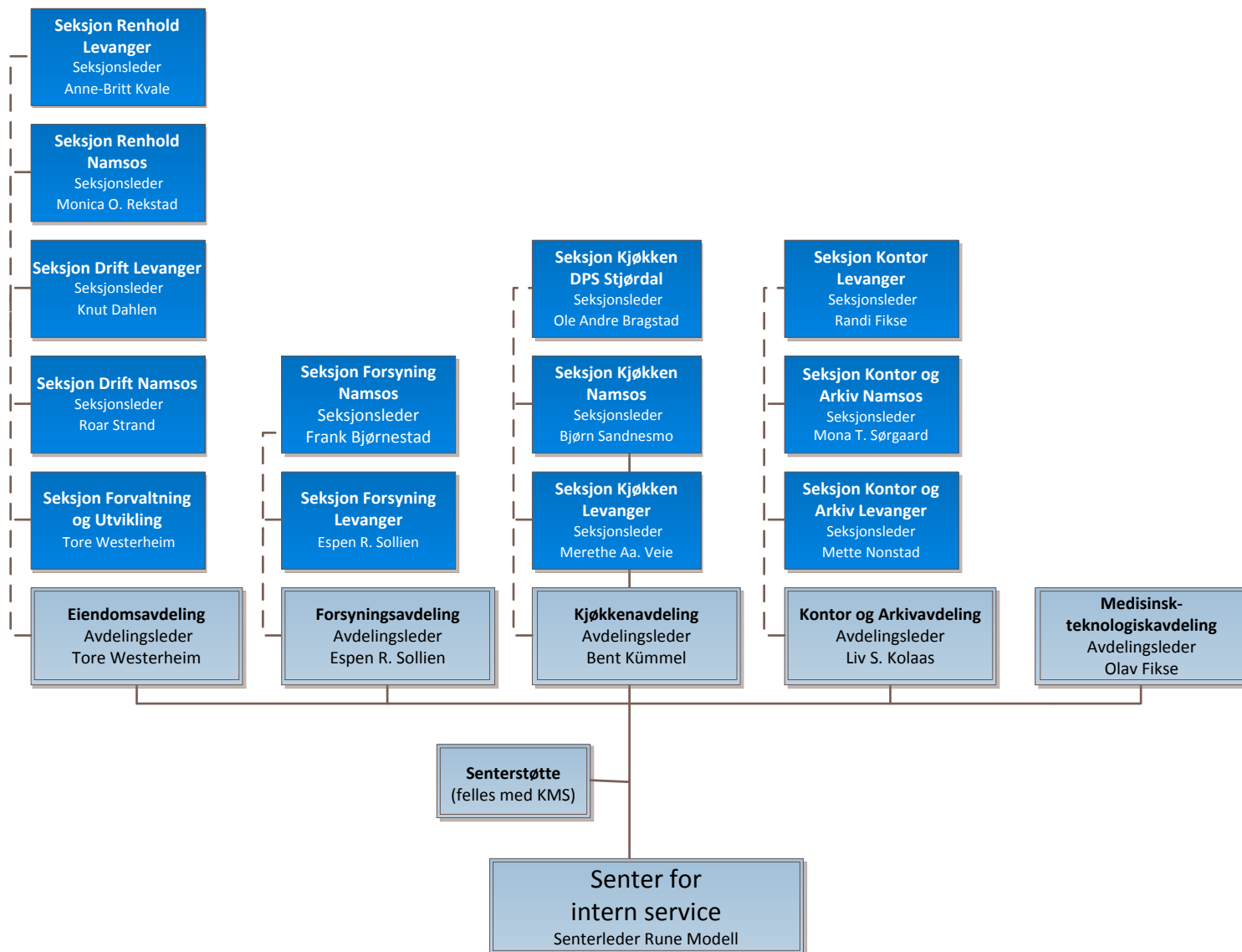
Klinikk for psykisk helsevern og rus





# HELSE NORD-TRØNDELAG

## Senter for intern service







# HELSE NORD-TRØNDELAG

Senter for virksomhetsstøtte og utvikling

